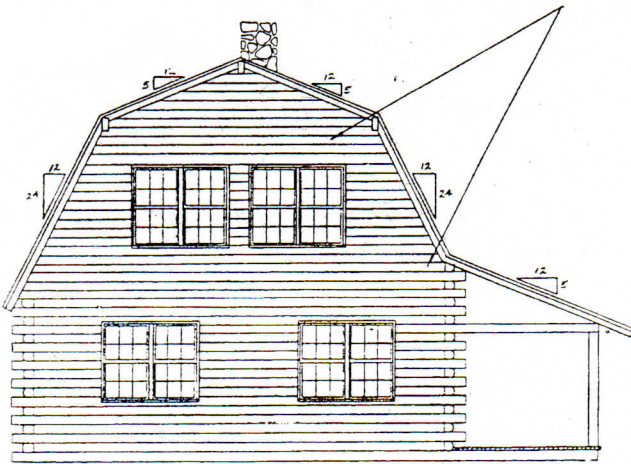
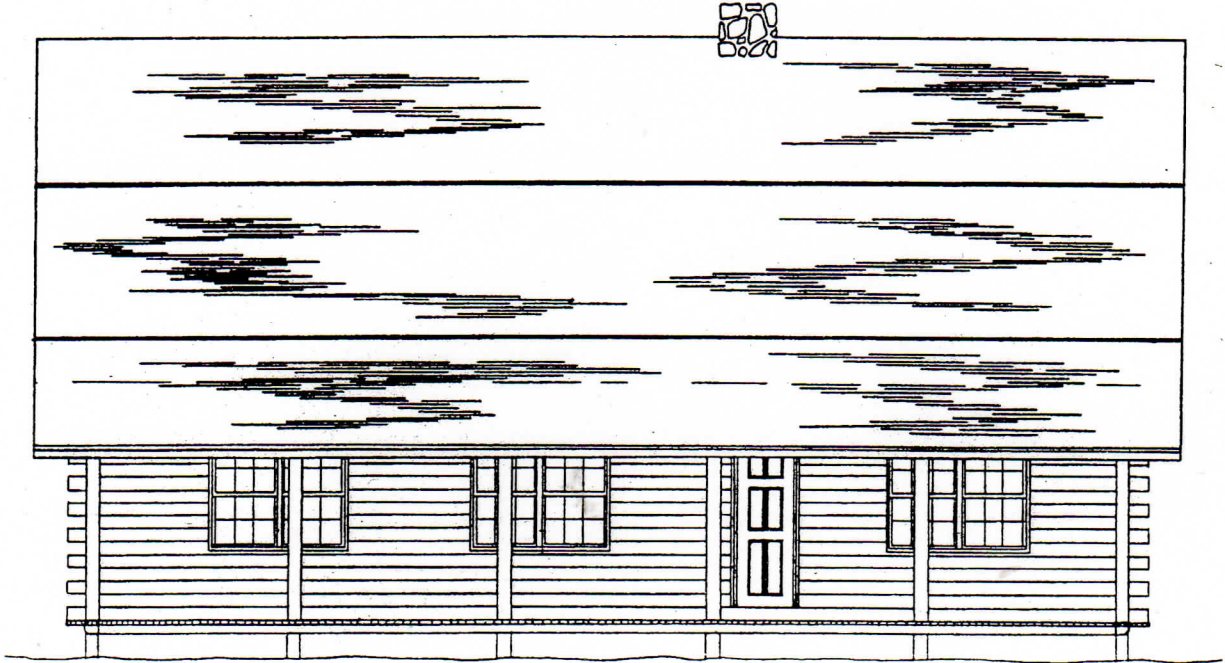


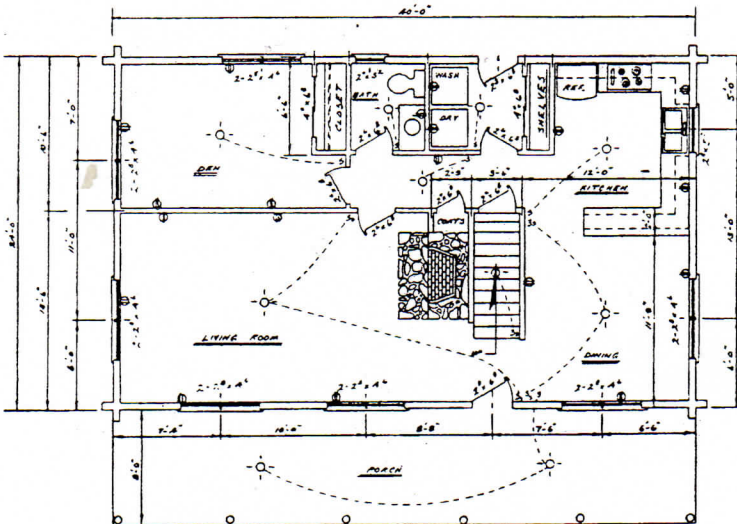
Habersham



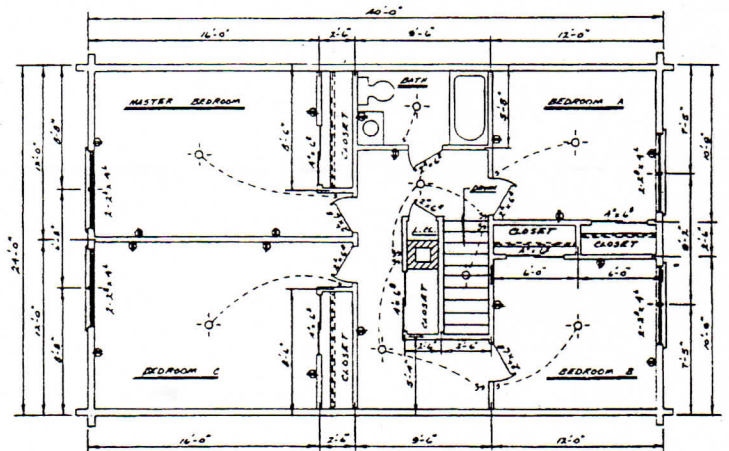
| DESCRIPTION | SQUARE FOOTAGE |
|-------------|------------------|
| 4 bedrooms | First floor 960 |
| 1 1/2 bath | Second floor 960 |
| Study | Total 1920 |
| 2 story | Porch 320 |

LOG PACKAGE INCLUDES

- Wall logs
- Gable logs
- Second floor log joists
- Log porch posts, plates and sill
- Roof rafters
- Spikes, caulking and dowel pins
- Blue prints
- 4 hours technical assistance



FIRST FLOOR PLAN



SECOND FLOOR PLAN

NATIONWIDE LOG HOMES

P.O. BOX 69

BALDWIN, GA 30511

706-778-5455